

GREENLEAF RESIDENCES
BIRMINGHAM, MI

CONSTRUCTION MANAGER...CSM GROUP
ARCHITECT...Eckert Wordell
DESIGNER...Mark Johnson Architects

- Metal Framing
- Level 5 Drywall Finish
- Custom Millwork
- Finish Carpentry



Exotic Wood Species

Jasman worked closely with the designer, Mark Johnson, to achieve his vision of open, unencumbered



FIVE EXQUISITE APARTMENT UNITS

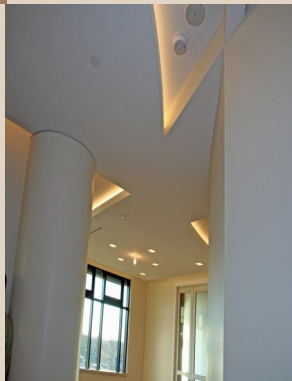


spaces. The challenge was keeping this open residential atmosphere in a



EACH UNIT STYLED TO REPRESENT DIFFERENT ERAS...

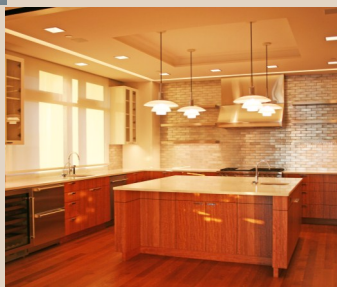
commercial building filled with electrical, mechanical & AV units. The finished condos offer state-of-the-art



From **THE 1920's**
Thru **The Present**



technology while maintaining the desired sophisticated elegance.



Contact:

Lee F. Jasinski
45800 Mast Street
Plymouth, MI 48170
Ph: 734-927-6440 Fax: 734-927-6450
ljaskinski@jasmanconstruction.com
www.jasmanconstruction.com

[For additional photos..click here](#)